



★★★★★ (53)

# Munich Lakes

## REBUILD YOUR ENERGY RESERVES IN SOUTHERN MUNICH

This cycle tour is all about nature and culture. In the capital of Munich, you will experience historic sights, beautiful gardens and the neo-Gothic town hall its famous carillon. The culinary arts also play a big role in the Bavarian state capital: hearty delicacies and beer specialities await you in the public gardens. But that's not all! With Eurobike you cycle through the south of Germany and discover the most beautiful corners of Bavaria.

### *Details of the 'Munich Lake District' cycle tour.*

The starting point of the tour is the beautiful Munich in Bavaria. **Culture Tip:** Plan a city tour in Munich before starting the cycle tour. You will be amazed by the many cultural attractions and the charming city centre. **By the way:** A trip to the Hofbräuhaus Munich absolutely must be on the programme.

With every turn of the wheel, the Bavarian way of life comes closer, because every town has its own history. Murnau am Staffelsee, Garmisch-Partenkirchen, Bad Tölz and the Tegernsee are just a few of the highlights of the Munich Lake District. What should you expect? Wild, romantic valleys, beautiful landscapes and lush alpine meadows as far as the eye can see. Take a relaxed cycle from A to B and enjoy the Bavarian flair to the fullest.

### *The highlights of the cycle tour at a glance*

- **Murnauer Moos:** On day three you cycle through the largest moorland in Central Europe, the Murnauer Moos nature reserve. As you make your way through the unspoiled landscape you can let your mind run wild and simply enjoy the scenery. When you arrive in Garmisch-Partenkirchen, the Eurobike team recommends a ride on the Zugspitzbahn at 2,962 metres. You will be impressed!
- **Bad Tölz:** Visit the location of the famous German TV show 'Der Bulle von Tölz'. Scenic landscapes and the Isarwinkel with its crystal clear, turquoise-blue water line the cycle path to Bad Tölz. A special feature are the richly decorated town houses and the film set of the now legendary crime series where Otfried Fischer starred as a police investigator.

- **Gmund am Tegernsee:** With every kilometre you cycle along the marvellous lake panorama to Gmund am Tegernsee. Treat yourself to a break at the lake and let your mind wander.

## *Useful information about the tour*

Fantastic cycle paths, flat side roads and a few short climbs make up the tour character of the Munich Lake District. Overall, the eight-day cycle tour through Bavaria is a simple tour and is perfect for leisure cyclists!

- Get all information and many more tour tips for our [cycle tours in Bavaria](#).
- We also offer this tour in the [charm version](#).

### *Medium*



8 Days / 7 Nights



Self-guided Tour

### **To the online version**



# Itinerary

DAY  
1

## *Arrival in Munich*

Welcome briefing and bike fitting. The capital city of Bavaria is awaiting you and invites you to visit its many attractions (English Garden, Town Hall, Hofbräuhaus,...)

Hotel (example): [NYX Hotel Munich](#)

---

DAY  
2

## *Munich – Murnau am Staffelsee* | approx. 65 km

From Munich, the tour starts with a bike ride through Forstenrieder Park to Lake Starnberg. Then you will cycle on the lakeside road to Seeshaupt. You will continue on wonderful ways through rustic Bavarian towns, past the Osterseen lakes and Lake Riegsee to Murnau am Staffelsee.

Hotel (example): [Griesbräu](#)

---

DAY  
3

## *Murnau – Garmisch Partenkirchen* | approx. 40 km

First, you will cycle through the nature reserve called Murnauer Moos (largest swamp area of Central Europe). Later, you will continue your tour through unspoiled nature following the River Loisach to Garmisch Partenkirchen. The stage is intentionally brief. Therefore, there is still enough time for an individual trip with the Zugspitzbahn, a mountain railway. At an altitude of 2962 meters, you will have a wonderful view of the Alps.

Hotel (example): [Hotel Vier Jahreszeiten](#)

---

DAY  
4*Garmisch Partenkirchen – Wallgau*

approx. 20 - 70 km

By bike you cycle from Garmisch Partenkirchen via Klais to the beautiful Barmsee. Afterwards you have the option of cycling directly to your overnight accommodation or taking a detour via Mittenwald and Scharnitz to the source of Isar. A total of 300 metres in altitude are covered to Scharnitz, from there slightly uphill through wild and romantic gorges and lush alpine meadows to the source of the Isar. Afterwards, you will cycle back through a sunny valley where you will have a marvellous panoramic view of the mountains of Karwendel and Wettersteingebirge, passing Mittenwald and finally arriving in Wallgau – a place where the Bavarian tradition is still a part of everyday life.

Hotel (example): [Gasthof Post](#)

---

DAY  
5*Wallgau – Bad Tölz*

approx. 50 km

Passing the Isarwinkel, you will follow the crystal-clear, turquoise waters of the impressive Lake Sylvenstein. Cycling through charming landscapes, you will pass Lenggries and finally arrive in Bad Tölz. The location at the crossroads of two trade routes - the River Isar and the old salt route from Reichenhall to Allgäu - quickly became a thriving trading centre. The ornate mansions testify the golden age.

Hotel (example): [Kolberbräu](#)

---

DAY  
6*Bad Tölz – Tegernsee – Bad Tölz*

approx. 45 km

You will cycle through the scenic Tegernsee countryside to Gmund at Lake Tegernsee where you will have a beautiful panoramic view of the lake. Following the valley Gaißbach, you will come back to Bad Tölz. The thermal waters of the famous spa "Alpamare" will help you to refresh your tired muscles. The Tölzer Market Street invites you to learn more about the famous television series "Der Bulle von Tölz".

Hotel (example): [Kolberbräu](#)

---

DAY  
7*Bad Tölz – München*

approx. 60 km

The Isar bike path leads you from Bad Tölz over Geretsried and Wolfratshausen directly to Grünwald. After a few short climbs you will arrive back in Bavaria's state capital Munich, where you can explore its countless sights and attractions.

Hotel (example): [NYX Hotel Munich](#)

---



*Departure or extension*

---

# *Tour character*

Overall, this is a rather easy tour. A few short climbs can be conquered easily by pushing the bike. You will cycle on beautiful bike ways and minor roads. Main roads will only be used for short distances. The route is mostly paved; some longer passages are on natural roads which are in good condition.

# Prices and events

*Place of arrival: Munich*

	<b>Season 1</b> 08.04.2023 - 14.04.2023   Arrival daily	<b>Season 2</b> 15.04.2023 - 12.05.2023   Arrival daily	<b>Season 3</b> 13.05.2023 - 09.09.2023   Arrival daily
<b>Munich lake tour, 8 days, DE-MURMM-08X</b>			
Base price	999,00	1,079,00	1,129,00
Surcharge half board evening meal 7x (mostly multi-course, sometimes outside the property, payable with voucher)	215,00	215,00	215,00
Surcharge single room	329,00	329,00	329,00

# Additional nights

*Place of arrival: Munich*

	<b>Season 1</b> Apr 8, 2023 - Apr 14, 2023   Arrival daily	<b>Season 2</b> Apr 15, 2023 - May 12, 2023   Arrival daily	<b>Season 3</b> May 13, 2023 - Sep 9, 2023   Arrival daily
<b>Munich</b>			
Double room p.P.	99,00	99,00	99,00
Surcharge single room	75,00	75,00	75,00

# Our rental bikes

*Filter*

<b>21-gear unisex incl. rental bike insurance</b>	99,00
---	-------

<b>rental bike PLUS incl. rental bike insurance</b>	159.00
<b>Electric bike incl. rental bike insurance</b>	239.00
<b>7-gear unisex incl. rental bike insurance</b>	99.00
<b>21-gear gents incl. rental bike insurance</b>	99.00

Prices per person in EUR



# Services and infos

## Services

### Included:

- Accommodation as already mentioned
- Breakfast
- Welcome briefing (DE, EN)
- Luggage transfer between the hotels
- EUROBIKE developed route
- Detailed travel documents 1x per room (German, English)
- 1x veal sausage breakfast
- GPS-data is available
- Service hotline

### Optional extras:

- Half-board evening meal (mostly multi-course, sometimes outside the property, payable with voucher)
- Bike rental, including rental bike insurance

## Infos

### Arrival / Parking / Departure:

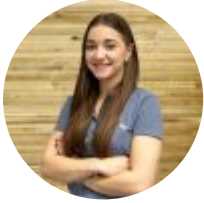
- Munich central train station
- Munich airport
- Multi storey car park costs approx. EUR 15 per day, to be paid for at the time, no reservation possible/necessary
- Free car park close to the hotel, no reservation possible/necessary

### Things to note:

- Tourist tax, if due, is not included in the price!
- Bike ticket for train journey to Garmisch – Scharnitz approx. € 5/bike
- Necessary expenses not included in the price of the trip. When possible all costs will be included in the quote, otherwise only the nature of the costs will be describe
- Further important information according to the package travel law can be found [here!](#)

## Contact & booking

Do you still have questions about the tour? We are happy to help and look forward to your inquiry.



**Elena Pötzelsberger, Travel specialist**



+43 6219 60866 135



e.poetzelsberger@eurobike.at

**Book now**

